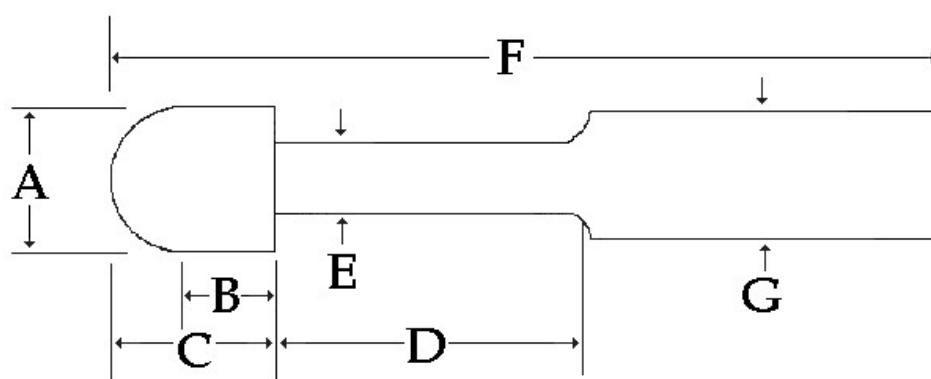


A

UNDERCUTTING TOOLS



HIGH SPEED STEEL & COBALT

| ORDER NO. | A | B | C | D | E | F | G |
|-----------|-----|-----|-----|-------|-------|-------|-----|
| SE-61S | 3/8 | 1/4 | 3/8 | 1-1/8 | 0.250 | 3-1/2 | 3/8 |
| SE-61L | 3/8 | 1/4 | 3/8 | 1-5/8 | 0.250 | 4 | 3/8 |
| SE-81S | 1/2 | 1/4 | 1/2 | 1-1/4 | 0.310 | 3-5/8 | 1/2 |
| SE-81L | 1/2 | 1/4 | 1/2 | 1-3/4 | 0.310 | 4-1/2 | 1/2 |
| SE-101S | 5/8 | 1/4 | 1/2 | 1-1/8 | 0.400 | 3-3/4 | 5/8 |
| SE-101L | 5/8 | 1/4 | 1/2 | 2-1/8 | 0.400 | 5-1/8 | 5/8 |
| SE-121S | 3/4 | 1/4 | 5/8 | 1-1/4 | 0.490 | 4-1/8 | 3/4 |
| SE-121L | 3/4 | 1/4 | 5/8 | 2-1/8 | 0.490 | 5-1/2 | 3/4 |

TO ORDER COBALT OR COATINGS,
 Add a suffix to the part number given above.
 for TIN Coated, add the suffix "TIN"
 for Cobalt, add the suffix "CO"
 for Cobalt TIN Coated, add the suffix "CO-TIN"
 If no suffix is given High Speed Steel will ship.